



WK7... Classifying Module



- Weighing module with conveyor belt for stationary weighing and inspection processes
- Product weight: max. 7 kg
- Belt dimensions:
300 × 240 mm
400 × 300 mm
- Up to 27 objects per minute
- Weighs objects and displays results (RS-232 interface), classifies objects, features relay outputs
- Data memory for 100 products
- Optional: series production error detection

In-line quality assurance is gaining increasing importance, especially for medium-sized businesses. Until now the costs of automation were too high – it was too costly to integrate modules into processes individually and flexibly. That is why Sartorius offers tailored solutions for individual requirements and applications at an unrivaled cost | performance ratio. The WK classifying module is a cost-effective solution that makes in-process stationary or dynamic quality control possible.

The WK module inspects individual objects with an impressively high degree of measuring accuracy. All modules are designed for universal use and can be integrated into existing systems very flexibly. The modules feature a user-friendly, backlit display and are easy to operate, achieving

reliable, fast, and accurate results. WK – the extremely accurate stationary classifying module with clockwise and counterclockwise functions for sorting objects as GOOD or BAD.

Objects can be fed into the WK classifying module with a simple chute, for example. The objects are automatically sorted into the customer's corresponding containers; GOOD objects are sent left and BAD objects are sent right. These directions can be changed if desired. The fully | semi-automatic WK module and its sophisticated WK indicator for optimal industrial use is perfect for quality assurance. It can be integrated in the middle and | or at the end of a process chain.

Technical Specifications

Housing

Material: powder-coated steel tower housing
Protection class IP65

Complies with EU Directive 2002/95/EC
(RoHS)

Display

14-segment display with application symbols
Weight value: 20 mm, 7 digits

Keypad

17-key display

Data Interface

RS-232

Optional interfaces via ext. modules

RS-485/422
PROFIBUS DP
Ethernet TCP | IP

Scale

Material

Galvanized steel
Austenitic stainless steel 1.4301

Weighing System

Single-point C3 weigh cell

Other Features

4 × height-adjustable feet
Leveling device
Overload protection

Operating Temperature Range

-10°C to +40°C

Resolution (not verifiable)

1 × 35,000 d

Limitation of Emissions

Complies with EN 61326-6-9:2006,
industrial environments

Defined Immunity to Interference

Complies with EN 61326-6-9:2006,
industrial environments

Conveyor Belt

	DC	ED
Conveyor belt width	240 mm	300 mm
Conveyor belt length	300 mm	400 mm
Transport speed	22 m/min	
Accuracy	± 0.4 g	
Weighing capacity	5 g – 7 kg	
Max. weight bearing capacity	10 kg	
Total weight	27 kg	
Throughput/objects per min.*	< 27	< 20
Connected voltage	230 V AC	
Control voltage	24 V DC	
Power consumption	70 VA	
Dimensions:		
Length	353 mm	453 mm
Width	481 mm	551 mm
Height	550 mm ± 20	550 mm ± 20
Max. object length	300 mm	400 mm
Max. object width	240 mm	300 mm
Current load	1 A (max.)	
Continuous sound pressure level	72 db (A) (max.)	

Functionality

- Belt with clockwise | counterclockwise function for automatic sorting as GOOD | BAD
- Sorting parameters entered freely on WK indicator
- Potential-free contact ready for supply

For use in, e.g., the plastics industry (directly on the spraying machine),
electronics, and pharmaceutical industry

Accessories

Printer

Data printer with date, time, and statistics program	YDP20-OCE
--	-----------

Mechanical Accessories

Dust covers for display unit (2 pieces)	YDC01SW
---	---------

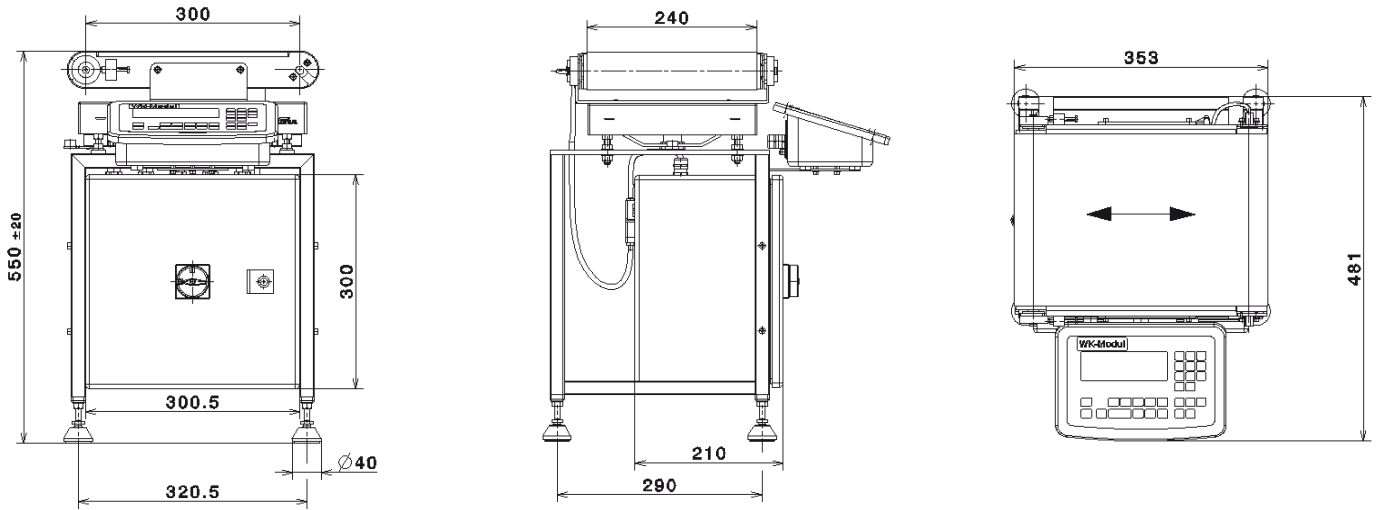
Cables

PC connection cable, 1.5 m	7357314
Printer connection cable, 3 m	YCC01-01CISLM3

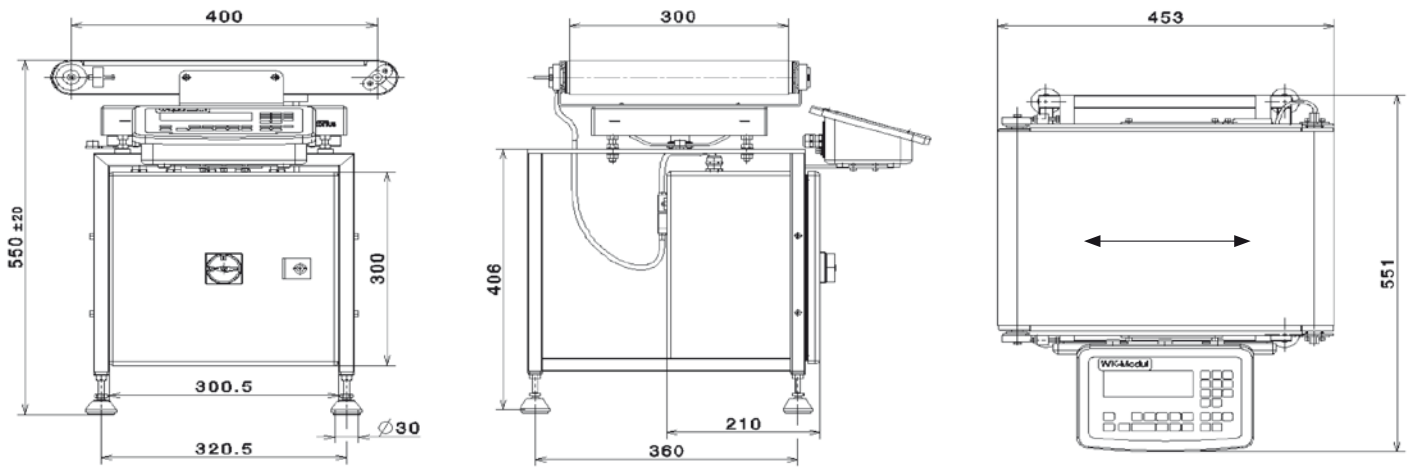
Electrical Accessories

External Alibi memory	YAM01IS
Adaptor for Alibi memory	YAM01IS YAM11IS
Data connection cable for PC, 25-pin DSUB (5 m)	YCC01-03ISM5
Data connection cable for PC, 9-pin DSUB (5 m)	YCC01-09ISM5
Round data connector (male) for separate assembly of data interface cable	69QC0010

WK7DCE-I000Q Dimensional Drawings



WK7EDE-I000Q Dimensional Drawings



Sartorius AG
Weender Landstrasse 94-108
37075 Goettingen, Germany

Telephone +49.551.308.0
Fax +49.551.308.3289

info.mechatronics@sartorius.com
www.sartorius-mechatronics.com

Specifications subject to change without notice.
Printed in Germany.
Printed on paper bleached without chlorine. | W
Publication No.: BOE2011-e11041
Order No.: 98649-011-93